



BUILDING A BRAVE FUTURE

INDIAN HILL EXEMPTED VILLAGE SCHOOL DISTRICT

PLANNING AND DESIGN VISION WORKSHOPS

Agenda

Process Overview

Planning & Design Vision Workshops Update

- **Campus Visions**
- **Additional Considerations**
- **Transition & Technical**
- **Budget**

Summary



MSA DESIGN

District Vision

WITH STUDENTS AT THE CORE OF ALL DECISIONS,
we will create a
SAFE LEARNING ENVIRONMENT that
ENHANCES the **SOCIAL** and **EMOTIONAL** aspects
for **EVERY STUDENT** and **ENABLE** them to
ACHIEVE their **FULLEST POTENTIAL** in
ACADEMICS, ARTS, and ATHLETICS.



MSA DESIGN

BUILDING A BRAVE FUTURE

Mission

- Further develop the visions for each of the campuses consistent with the recommendations of the Facilities Committee and Board of Education.
- Explore future-ready schools and innovative learning environments.



MSA DESIGN

BUILDING A BRAVE FUTURE

Planning and Design Focus Groups

The Project Team consisted of three (3) focus groups made up of over 40 parents, faculty and staff:

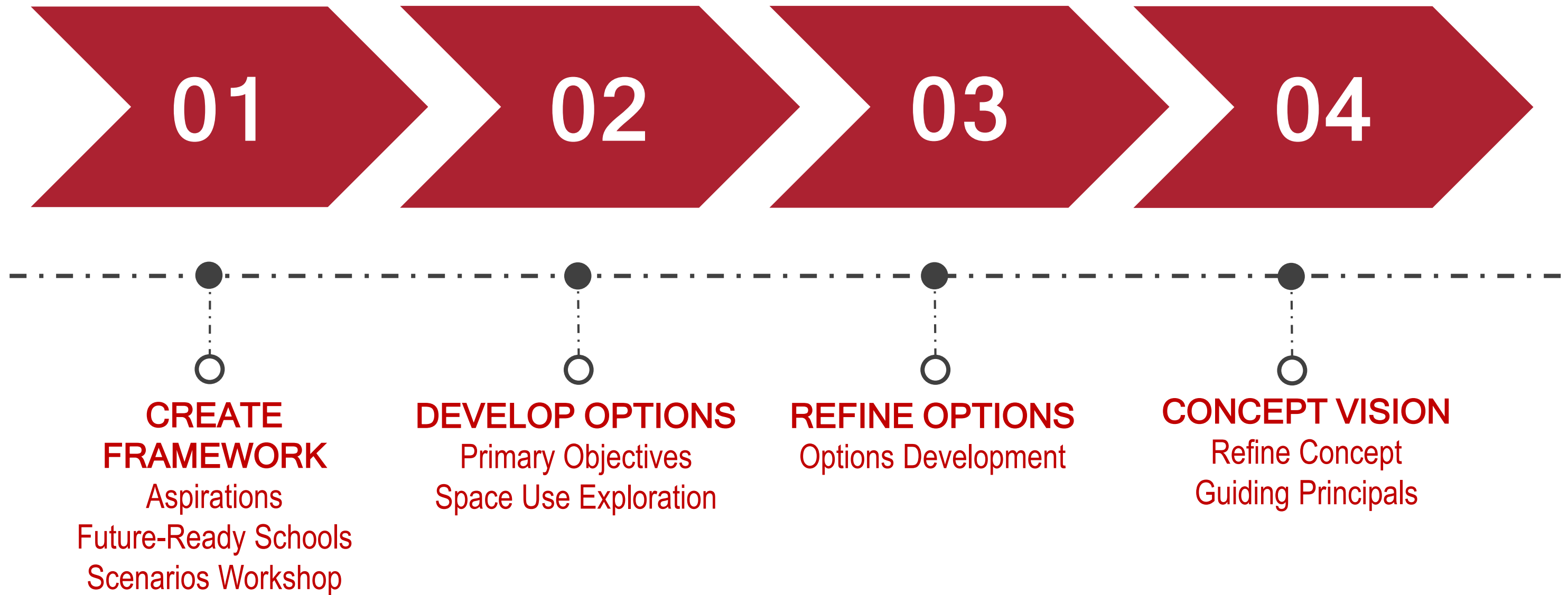
- **Primary & Elementary School Facility**
- **Middle & High School Facility**
- **Transition & Technical**



MSA DESIGN

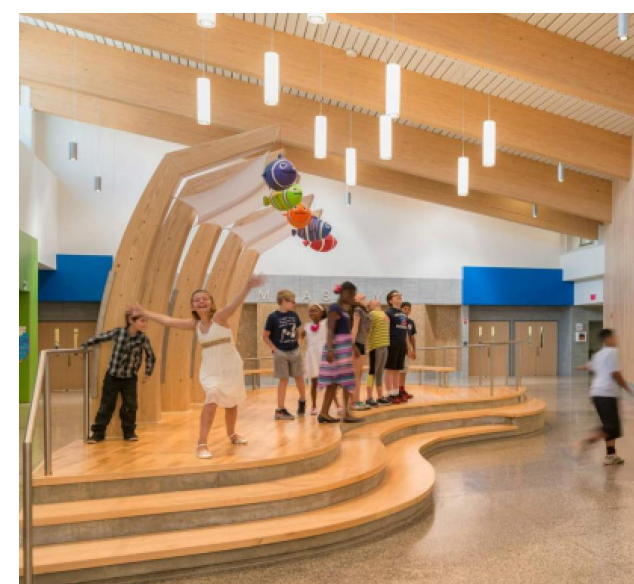
BUILDING A BRAVE FUTURE

Fall 2020 Process



MSA DESIGN

BUILDING A BRAVE FUTURE



MSA DESIGN

BUILDING A BRAVE FUTURE

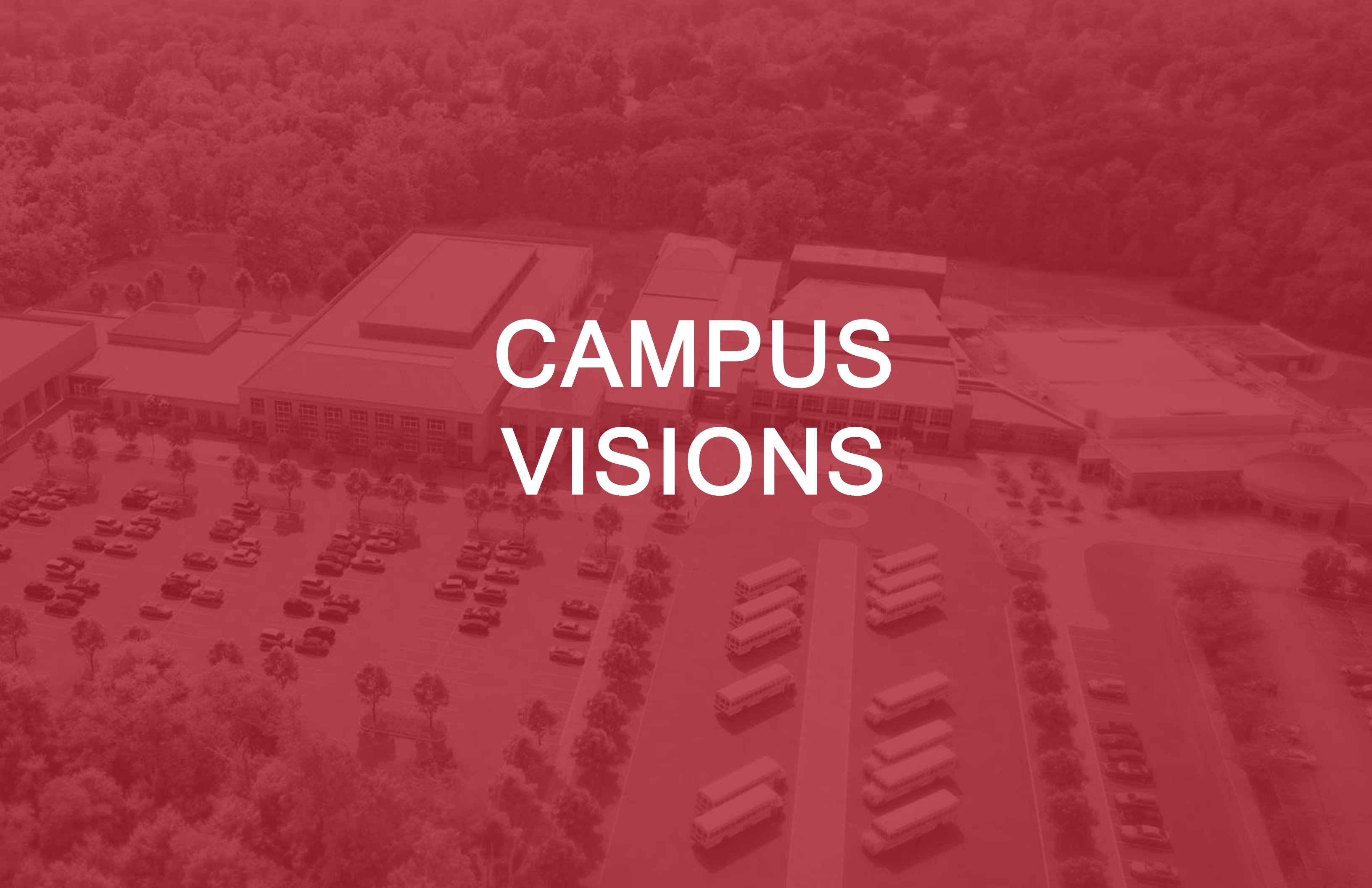
Main Focus

- **Priorities -**
 - **Safety & security**
 - **Learning environments now & into the future**
 - **Healthy indoor air quality**
 - **District wide infrastructure, maintenance & energy improvements**
- **Focus on staying within the approved budget**



MSA DESIGN

BUILDING A BRAVE FUTURE



CAMPUS VISIONS

Primary School



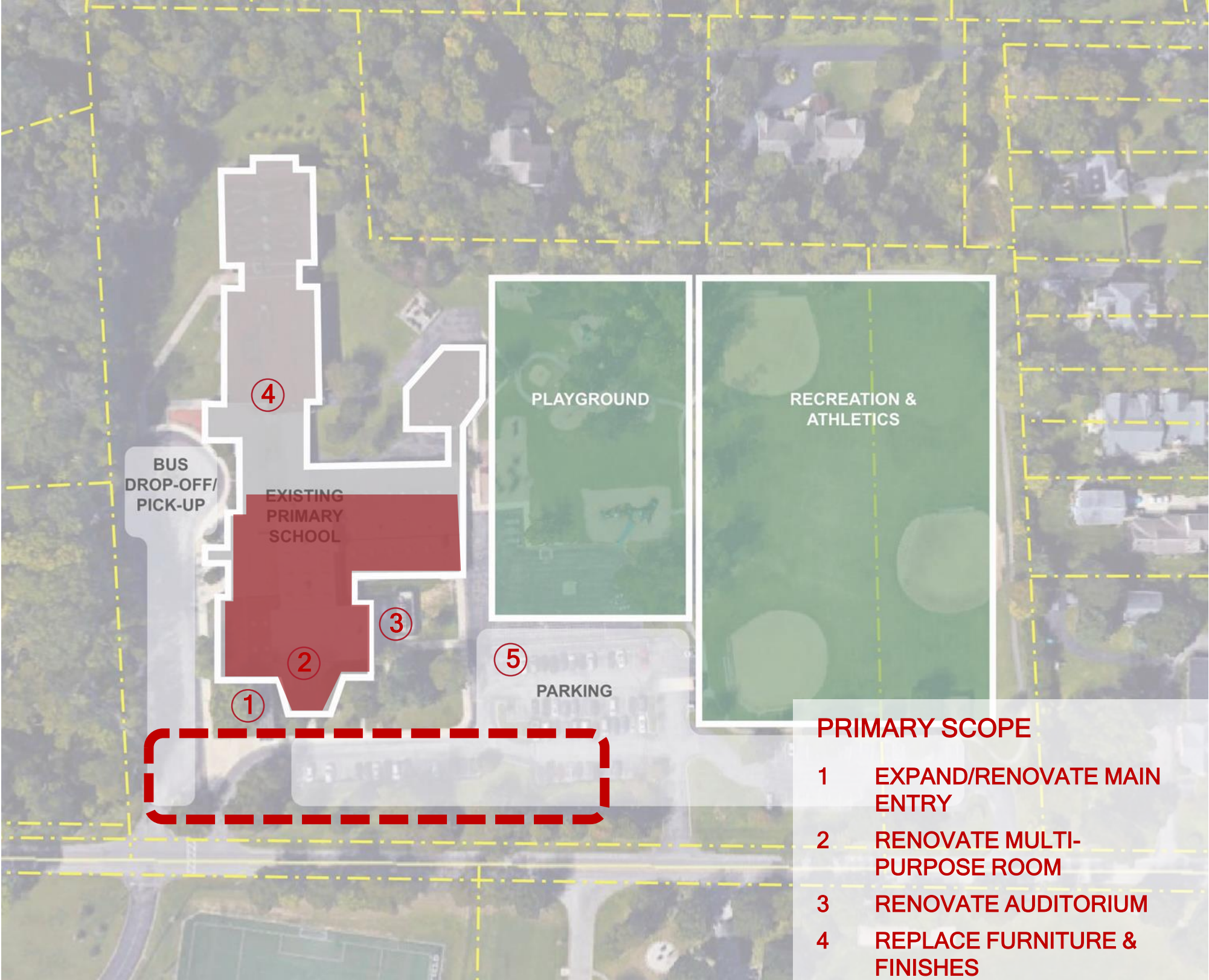
MAIN ENTRY PLAZA



MSA DESIGN

BUILDING A BRAVE FUTURE

PRIMARY SCHOOL CAMPUS



GOALS

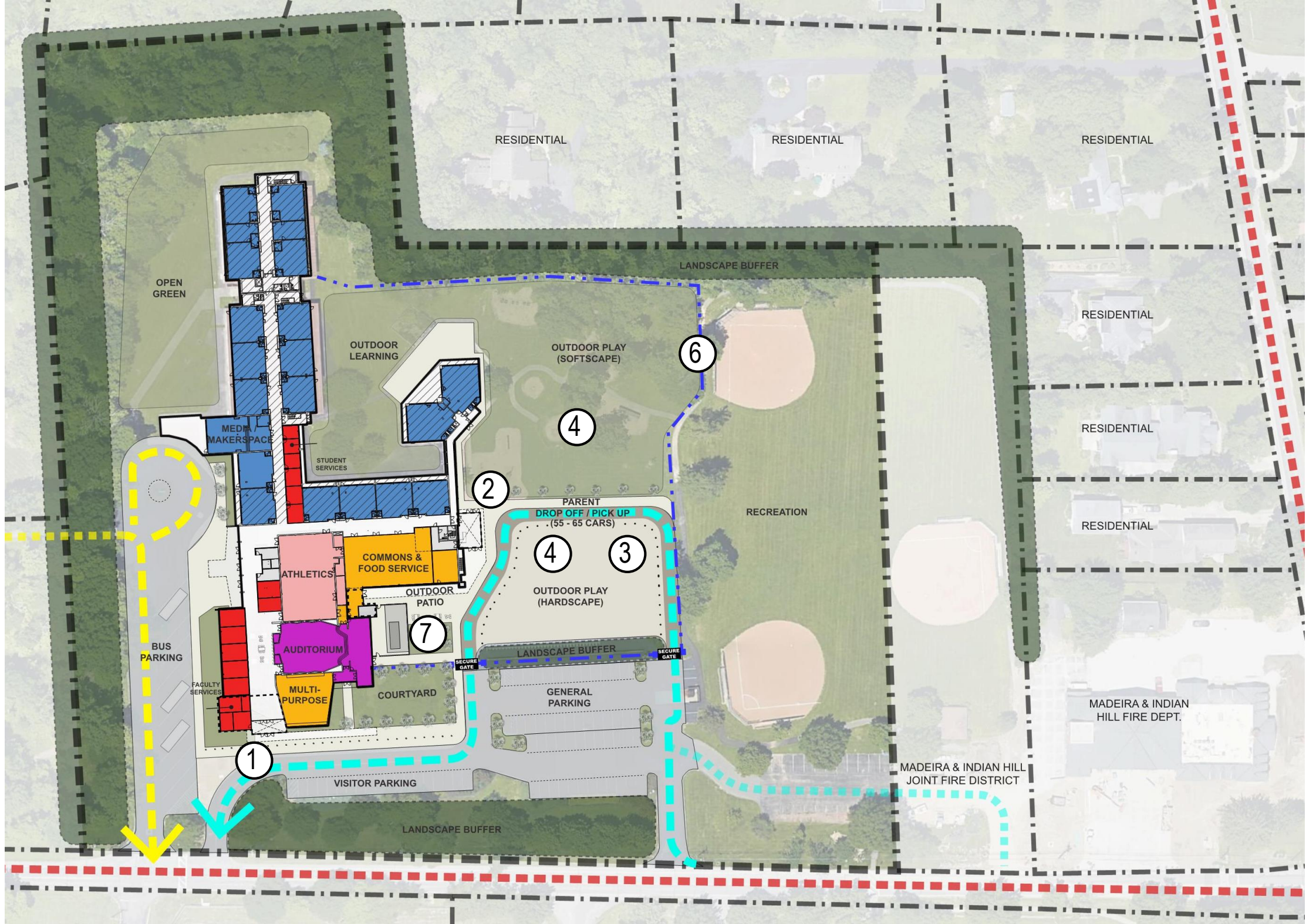
- IMPROVED OUTDOOR LEARNING/PLAY
- NEW SECURE & WELCOMING ENTRY
- EXPANDED DINING COMMONS & UPDATED KITCHEN
- IMPROVED MULTI-PURPOSE ROOM
- ENHANCED AUDITORIUM
- EXPANDED STUDENT SERVICES & FRONT OFFICES
- EXPANDED DROP-OFF/PICK-UP
- IMPROVE CAMPUS SAFETY & SECURITY



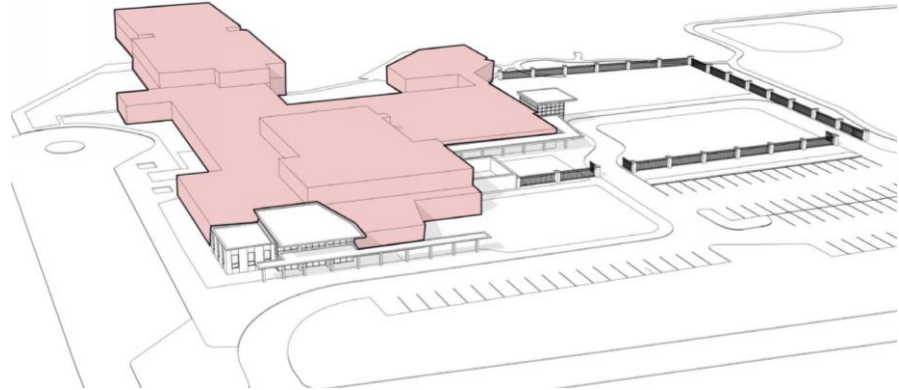
MSA DESIGN

BUILDING A BRAVE FUTURE

CAMPUS PLAN - Base Concept Primary School



- 1 NEW SECURE MAIN ENTRY ELEMENT
- 2 ENHANCE SECONDARY ENTRY
- 3 EXPANDED DROP-OFF/ PICK-UP
- 4 RECONFIGURE AND IMPROVE OUTDOOR AREAS FOR LEARNING AND PLAY
- 5 SECURED PERIMETER FOR OUTDOOR LEARNING AND PLAY AREAS
- 6 PROVIDE OUTDOOR PATIO (ENCLOSE MECHANICAL COURTYARD WITH MASONRY SCREEN WALL)



- - - - - AUTO TRAFFIC
- - - - - BUS TRAFFIC

*CLICK TO SEE CONCEPT TRANSITION PLAN



MSA DESIGN

BUILDING A BRAVE FUTURE

VIEW FROM EAST - Primary School Existing



MSA DESIGN

BUILDING A BRAVE FUTURE

VIEW FROM EAST - Base Primary School



MSA DESIGN

BUILDING A BRAVE FUTURE

CONCEPT PLAN - Additional Considerations - Primary School

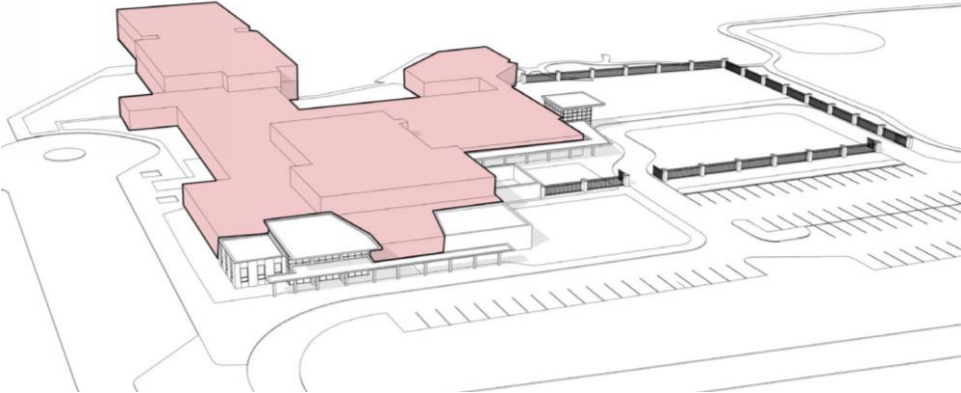


A EXPANDED STORAGE & BACK-OF-HOUSE SPACE

- PROVIDE ADDITIONAL STORAGE AND BACK-OF-HOUSE SUPPORT FOR MULTI-PURPOSE AND AUDITORIUM SPACES

B ENTRANCE ENHANCEMENTS

- IMPROVE FUNCTION AND APPEARANCE



MSA DESIGN

BUILDING A BRAVE FUTURE

VIEW FROM EAST - Additional Considerations



MSA DESIGN

BUILDING A BRAVE FUTURE

Elementary School



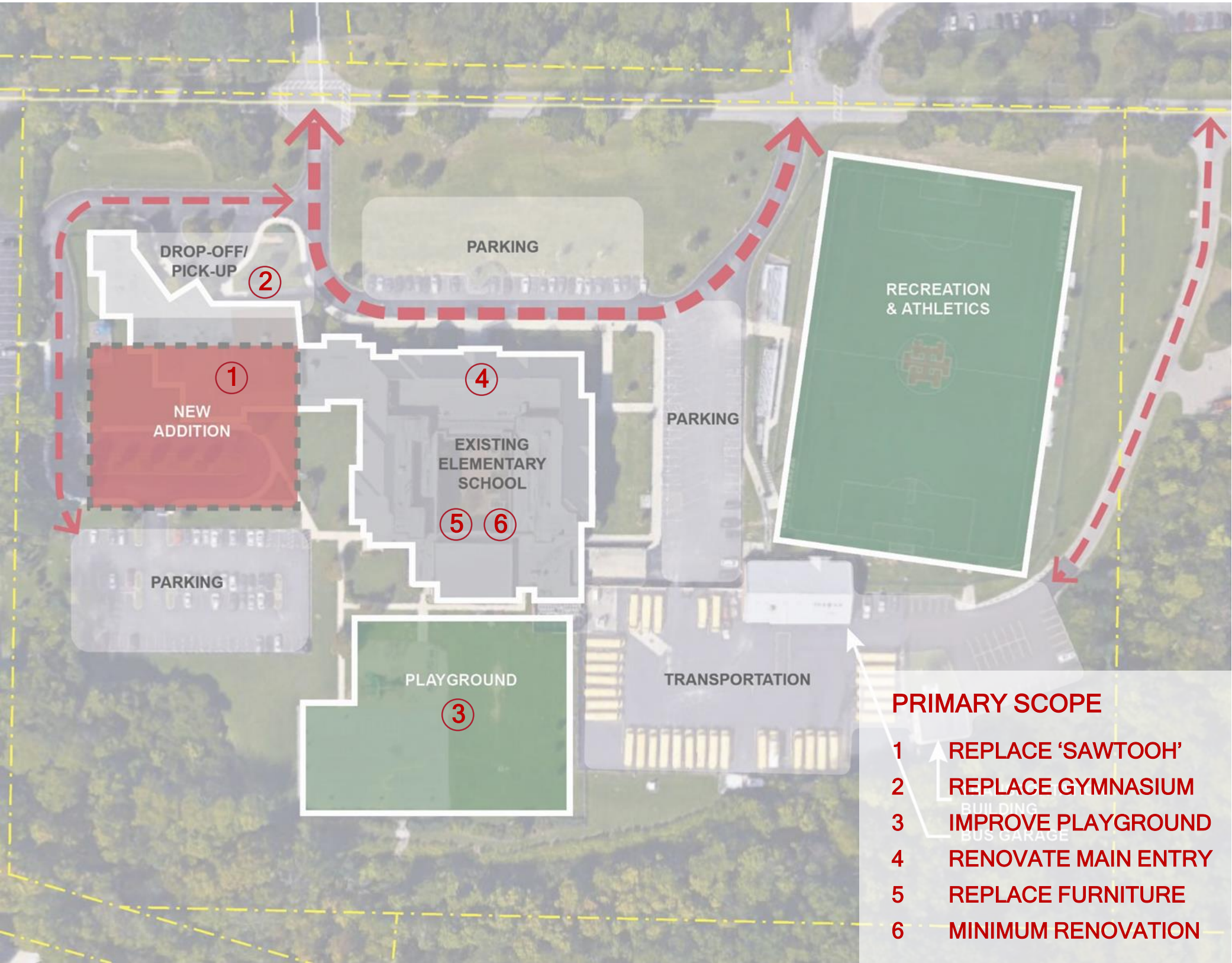
ENTRY COURT



MSA DESIGN

BUILDING A BRAVE FUTURE

ELEMENTARY SCHOOL CAMPUS



GOALS

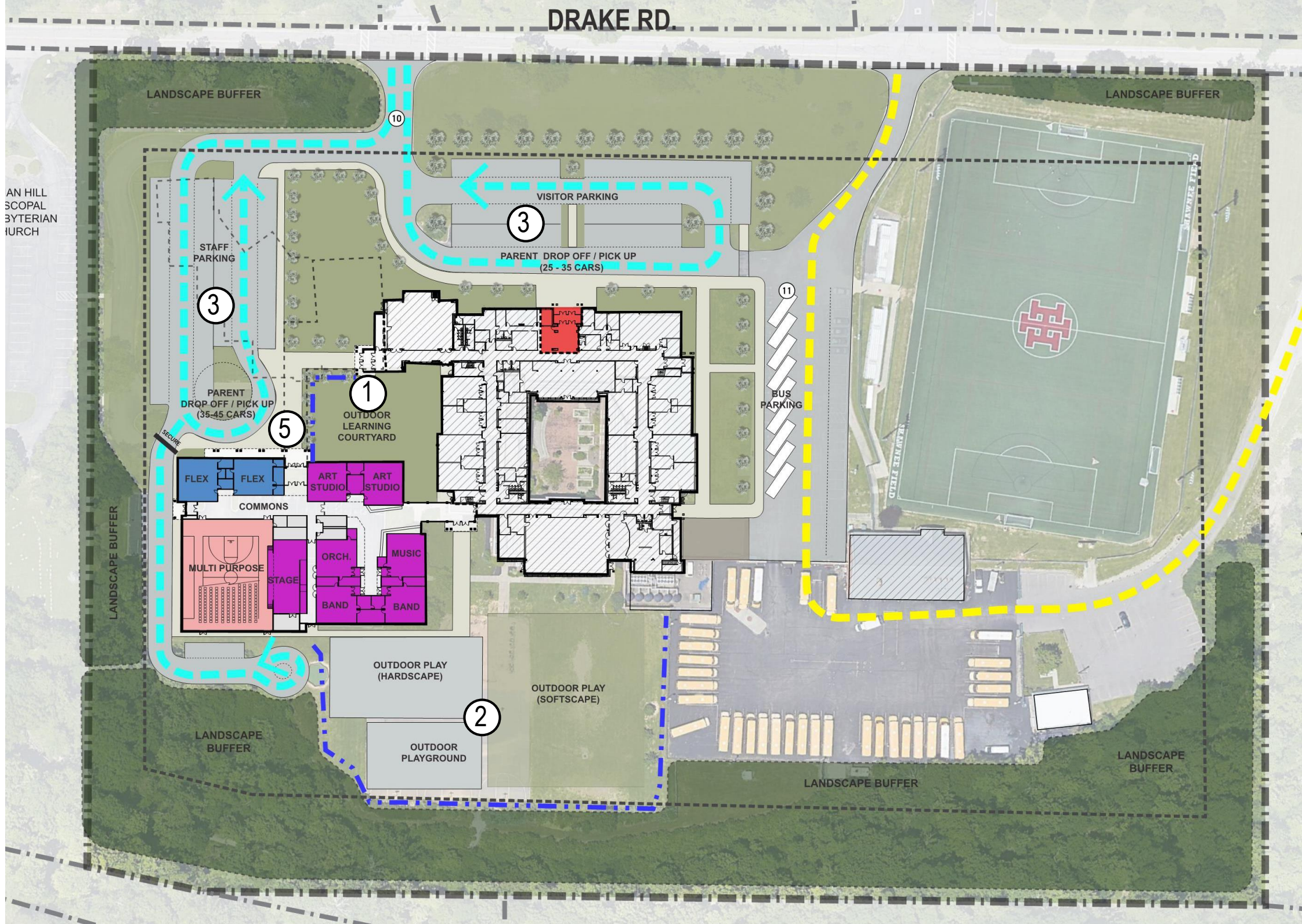
- ACTIVE, ENGAGING & DYNAMIC FINE ARTS LEARNING ENVIRONMENTS
- LARGE, MULTI-PURPOSE SPACE THAT SUPPORTS RECREATIONAL AND PERFORMING ARTS USES
- SECURE & FULLY ACCESSIBLE OUTDOOR LEARNING & PLAY SPACES
- SECURE MAIN ENTRY

[*CLICK TO VIEW FACILITY MASTER PLAN](#)

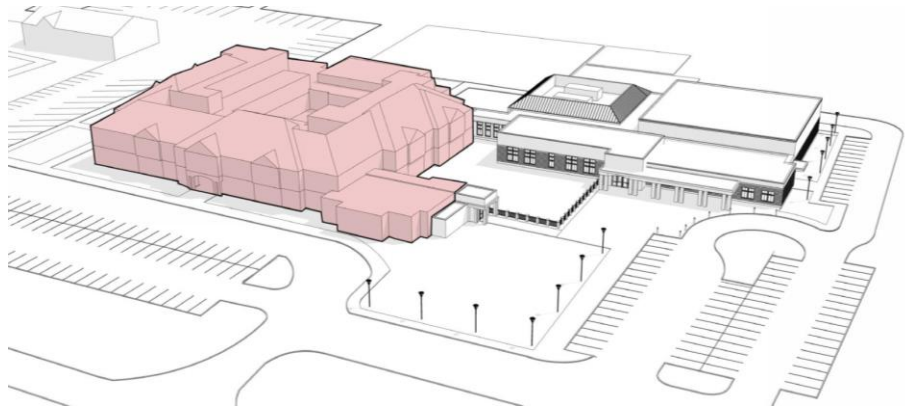


MSA DESIGN

CAMPUS PLAN - Base Concept



- 1 SECURE OUTDOOR LEARNING COURTYARD
- 2 IMPROVED/RECONFIGURED & SECURED OUTDOOR PLAY AREAS
- 3 IMPROVED/RECONFIGURED PARKING, DROP-OFF & PICK-UP
- 4 IMPROVE DRAINAGE AND OUTDOOR SPACE
- 5 SECURE SECONDARY ENTRY FOR AFTER HOURS EVENTS



- - - - - AUTO TRAFFIC
- - - - - BUS TRAFFIC

*CLICK TO SEE CONCEPT TRANSITION PLAN



MSA DESIGN

BUILDING A BRAVE FUTURE

VIEW FROM WEST - Existing



MSA DESIGN

BUILDING A BRAVE FUTURE

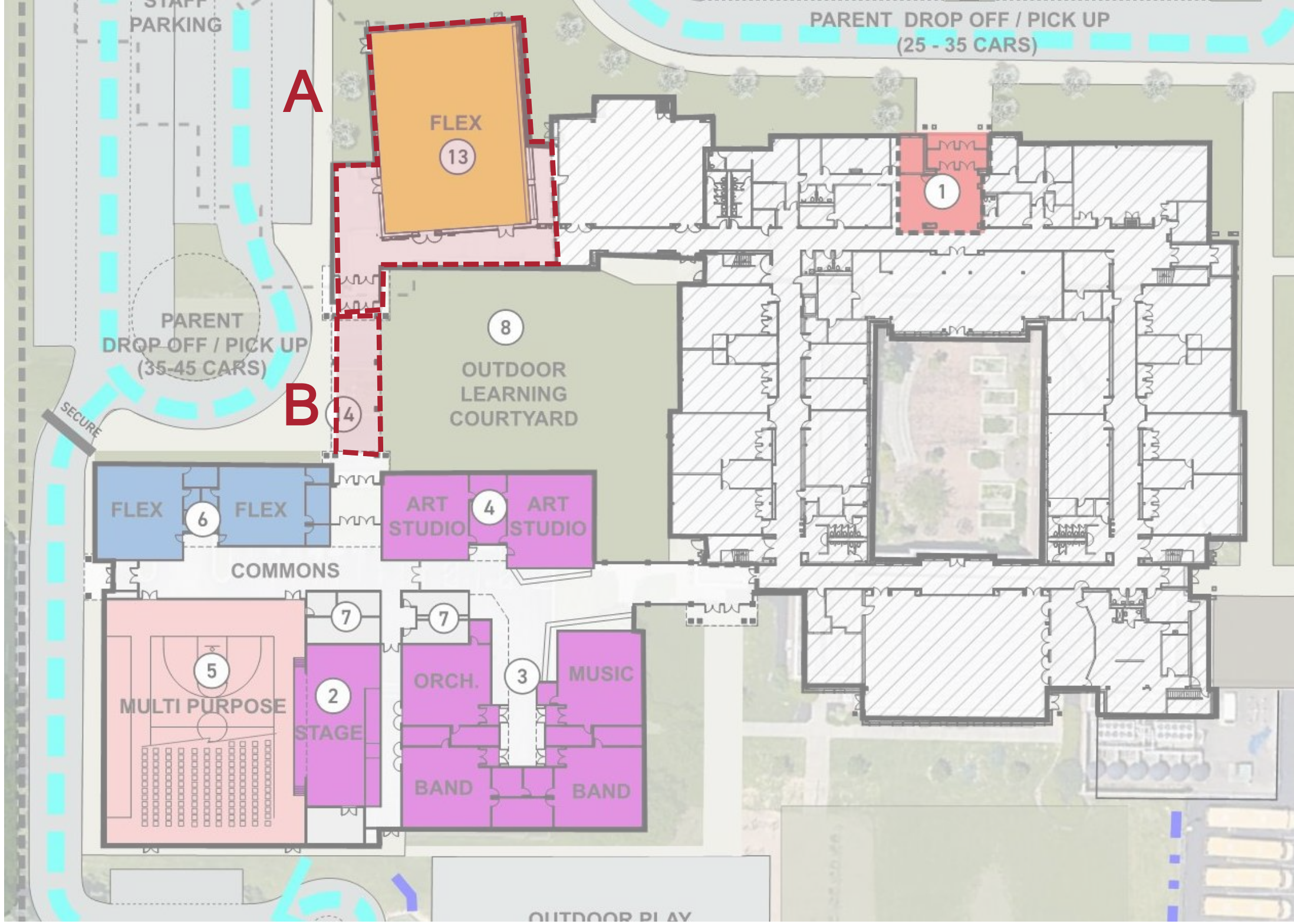
VIEW FROM WEST - Base Concept



MSA DESIGN

BUILDING A BRAVE FUTURE

CONCEPT PLAN - Additional Considerations - Elementary School

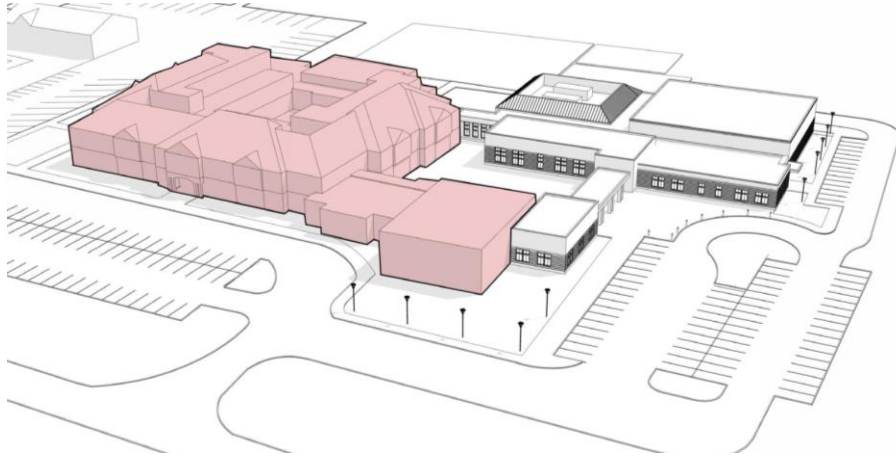


A REPURPOSE EXISTING GYM

- ACCOMMODATE ADDITIONAL DISTRICT & COMMUNITY PROGRAM NEEDS
- OPPORTUNITY FOR UNIQUE EXTENDED LEARNING SPACE (STEM LAB, HANDS-ON & PLAY SPACE, ETC.)
- OVERFLOW FOR WHEN NEW GYM IS BEING USED FOR PERFORMANCE SPACE

B CONNECTOR ELEMENT

- IMPROVE ACCESS BETWEEN SPACES
- ENCLOSE OUTDOOR LEARNING COURT
- UNIFY OVERALL BUILDING



MSA DESIGN

BUILDING A BRAVE FUTURE

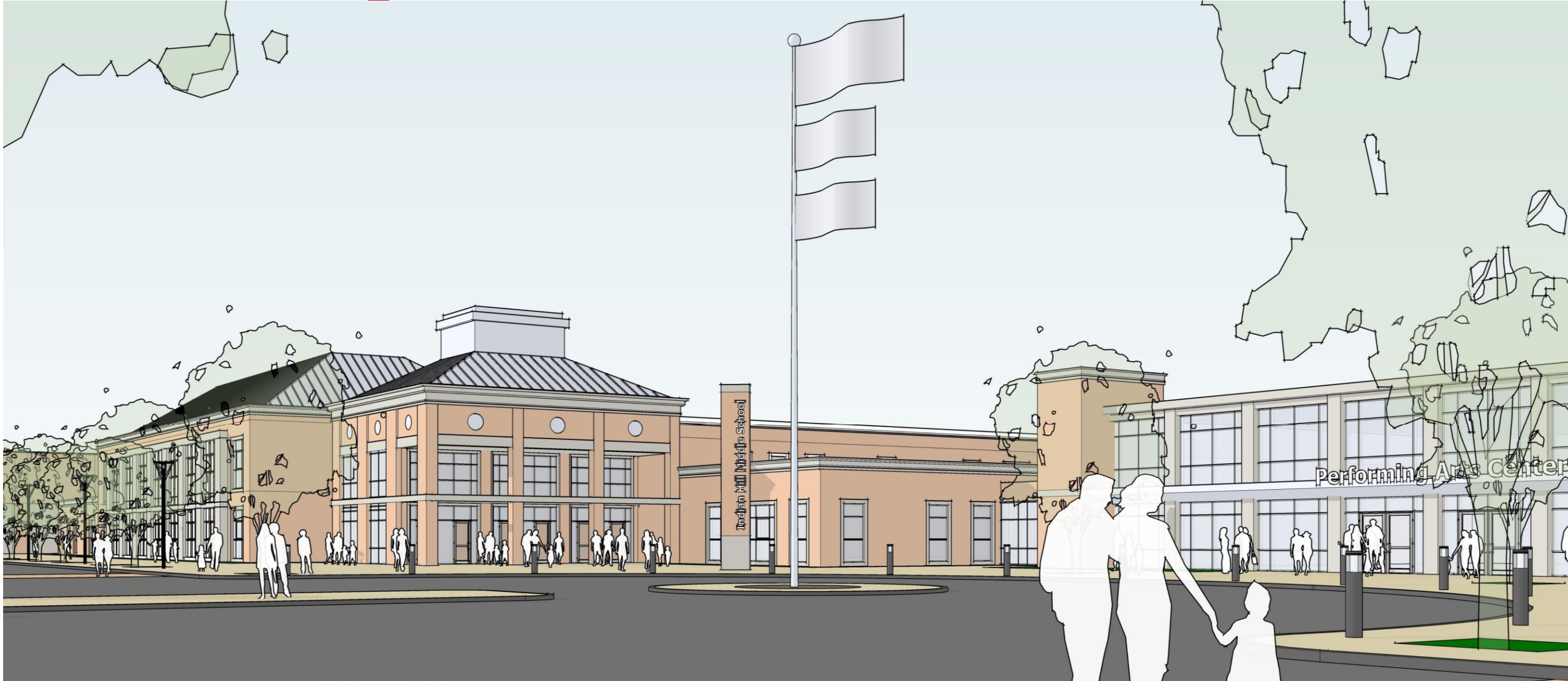
VIEW FROM WEST -Additional Considerations - Elementary School



MSA DESIGN

BUILDING A BRAVE FUTURE

Middle & High School



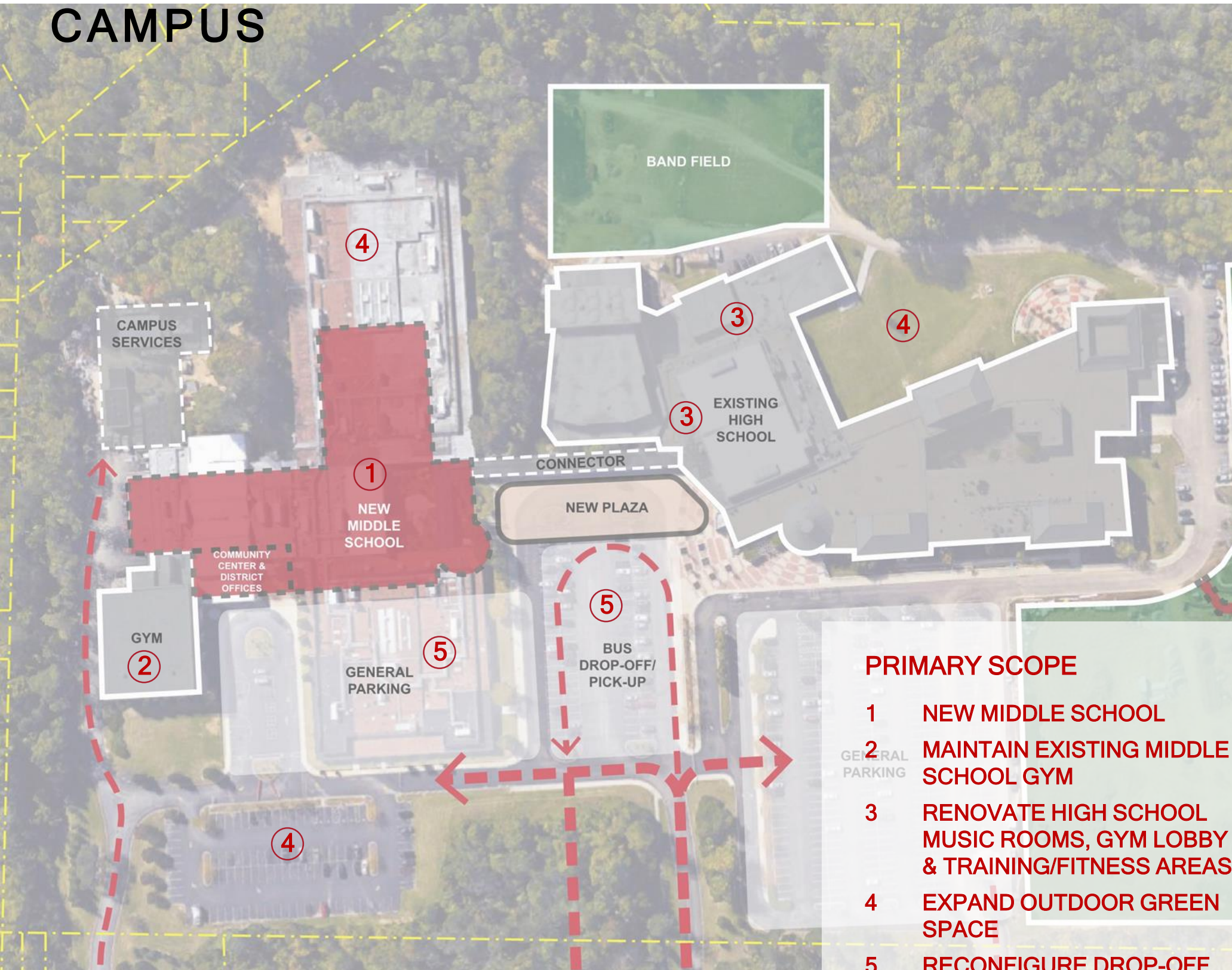
ENTRY COURT & MIDDLE SCHOOL ENTRY



MSA DESIGN

BUILDING A BRAVE FUTURE

MIDDLE SCHOOL & HIGH SCHOOL CAMPUS



PRIMARY SCOPE

- 1 NEW MIDDLE SCHOOL
- 2 MAINTAIN EXISTING MIDDLE SCHOOL GYM
- 3 RENOVATE HIGH SCHOOL MUSIC ROOMS, GYM LOBBY & TRAINING/FITNESS AREAS
- 4 EXPAND OUTDOOR GREEN SPACE
- 5 RECONFIGURE DROP-OFF, PARKING & ACCESS DRIVES

GOALS

- ENGAGING, FLEXIBLE & MULTI-PURPOSE LEARNING ENVIRONMENTS
- SECURE, WELCOMING & EASILY IDENTIFIABLE MAIN ENTRY
- WELL ORGANIZED, EASY TO NAVIGATE & FULLY ACCESSIBLE SITE & BUILDINGS
- HIGH PERFORMING & SUSTAINABLE FACILITIES
- CONNECTED & COMMUNITY-FOCUSED CAMPUS

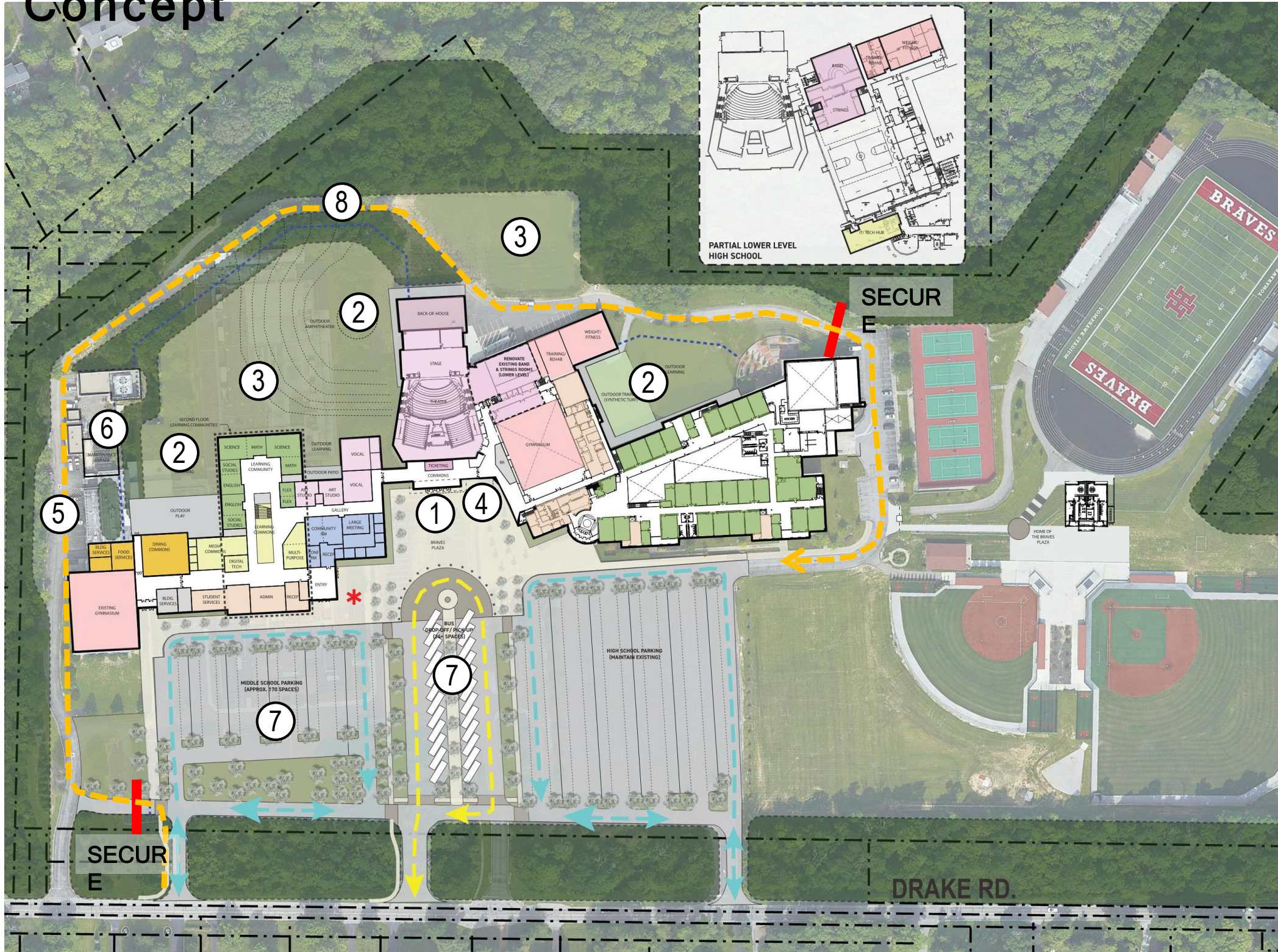
[*CLICK TO VIEW FACILITY MASTER PLAN](#)



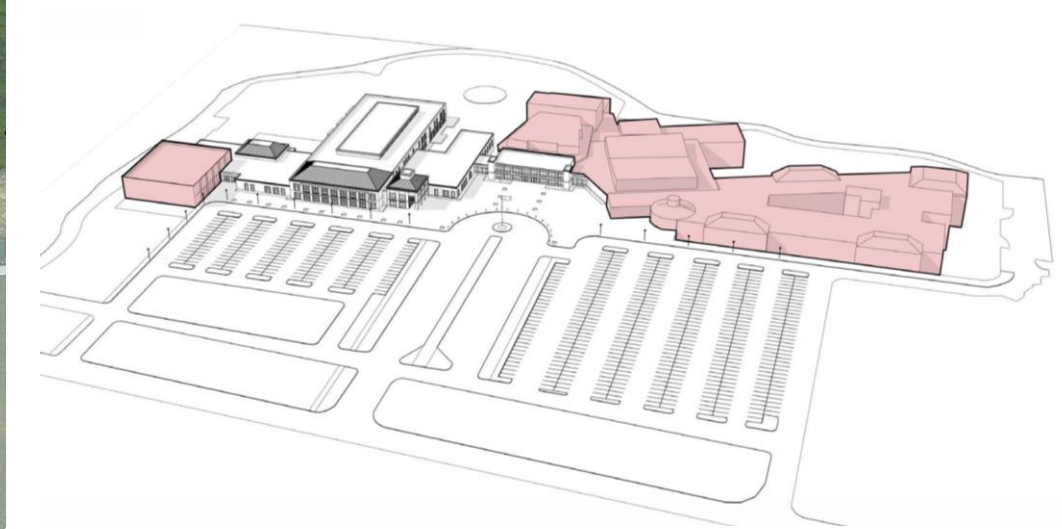
MSA DESIGN

BUILDING A BRAVE FUTURE

CAMPUS PLAN - Base Concept



- 1 CENTRALIZED ENTRY PLAZA
- 2 IMPROVEE/EXPANDED OUTDOOR AREAS
- 3 MAXIMIZE GREEN SPACE
- 4 ENHANCED ATHLETICS ENTRANCE
- 5 RECONFIGURED SERVICE/LOADING AREA
- 6 IMPROVED MAINTENACE FACILITIES
- 7 RECONFIGURED DROP-OFF/PICK-UP & PARKING
- 8 IMPROVED CAMPUS ACCESS



- - - - - SERVICE TRAFFIC
- - - - - AUTO TRAFFIC
- - - - - BUS TRAFFIC

*CLICK TO SEE CONCEPT TRANSITION PLAN



BUILDING A BRAVE FUTURE

VIEW FROM EAST - Existing



MSA DESIGN

BUILDING A BRAVE FUTURE

VIEW FROM EAST - Base Concept



MSA DESIGN

BUILDING A BRAVE FUTURE

VIEW FROM WEST - Existing



MSA DESIGN

BUILDING A BRAVE FUTURE

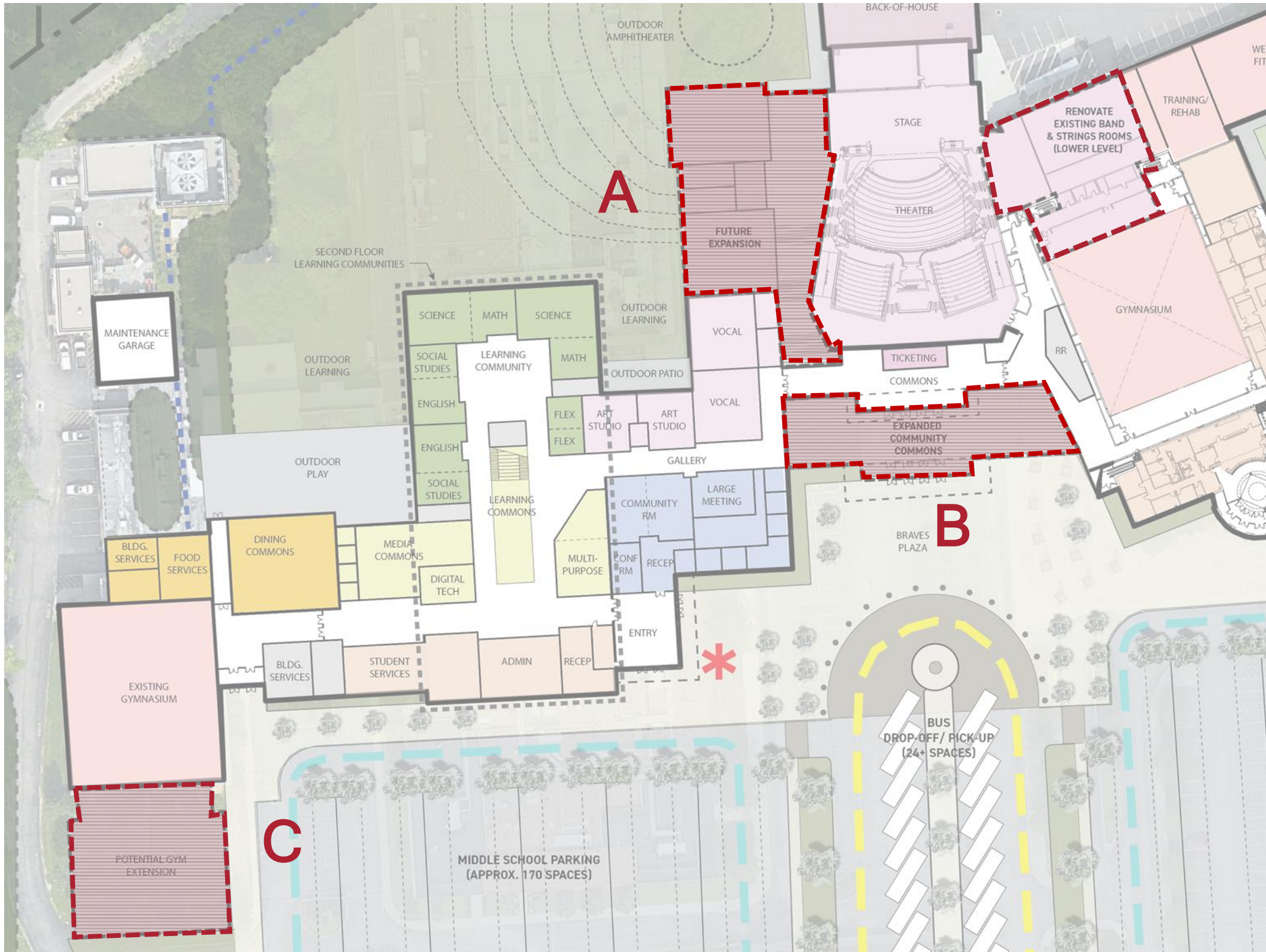
VIEW FROM WEST - Base Concept



MSA DESIGN

BUILDING A BRAVE FUTURE

CONCEPT PLAN - Additional Considerations - Middle & High School



A COMBINED MUSIC ROOMS

- SUPPORT COLLABORATION AND ENGAGEMENT
- IMPROVED ACCESS AND VISIBILITY
- CONSOLIDATE PROGRAMS AND SHARED RESOURCES

B EXPANDED CONNECTOR

- EXPANDED PRE-FUNCTION SPACE FOR EVENTS AND PROGRAMS (INCLUDES CONCESSIONS, RESTROOMS, ETC.)
- IMPROVED ACCESS TO THEATER AND GYMNASIUM
- ADDITIONAL COMMUNITY SPACE

C ADDED AUXILIARY GYM

- ACCOMMODATE ADDITIONAL DISTRICT & COMMUNITY PROGRAM NEEDS



MSA DESIGN

BUILDING A BRAVE FUTURE

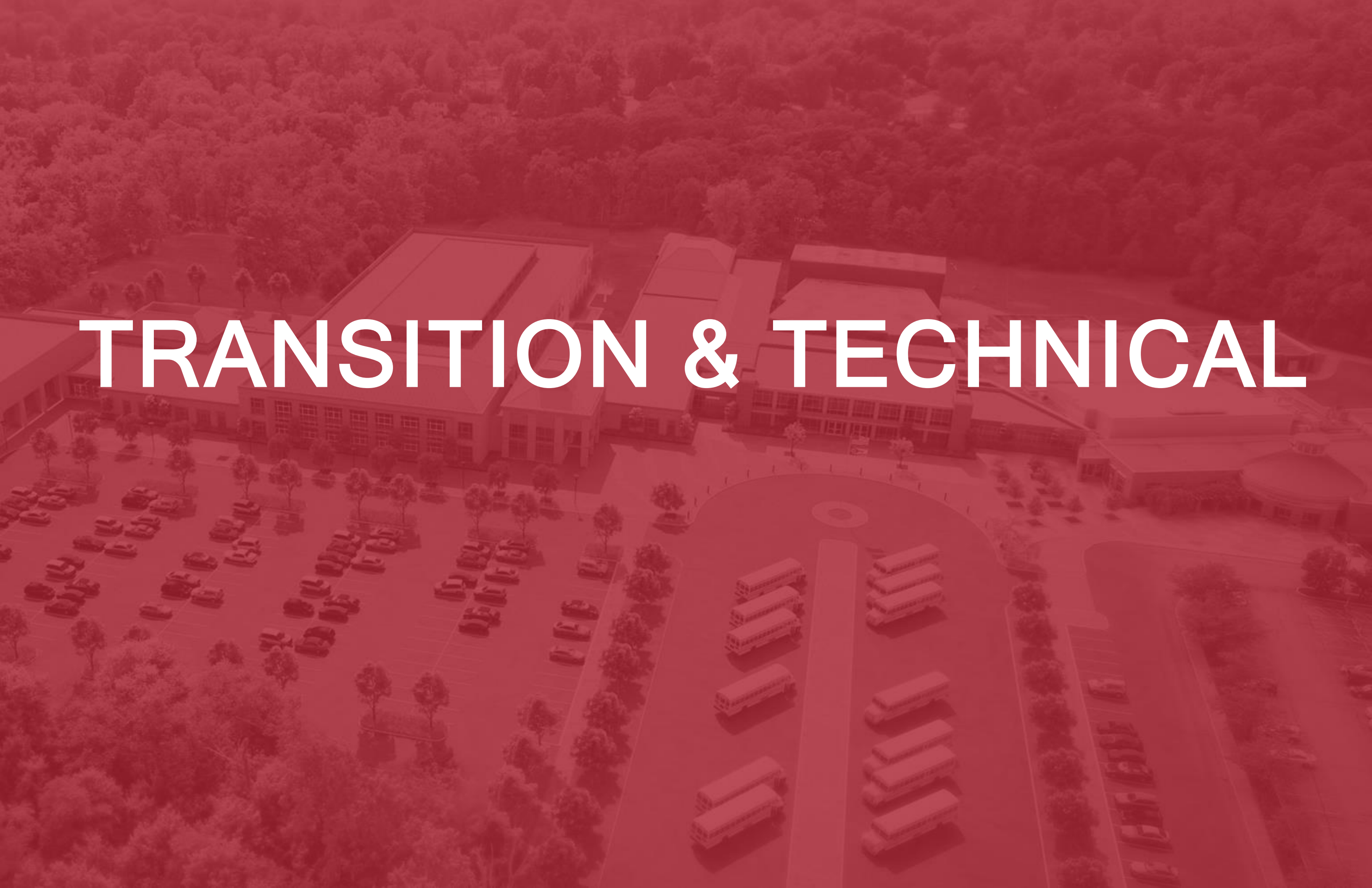
VIEW FROM EAST - Additional Considerations



MSA DESIGN

BUILDING A BRAVE FUTURE

TRANSITION & TECHNICAL



Transition & Technical Summary

- **Safety and Security**
- **Technology**
- **Sustainability**
- **Traffic Flow Logistics – During and After Construction**
- **Construction Transition**



MSA

DESIGN



BUDGET

Approved District Budget

Primary School	\$10.3 million
Elementary School	\$16.5 million
Middle School	\$40.0 million
High School	\$9.5 million
Transportation	\$700k
Total Project	\$77.0 million

*Anticipated Savings from
Energy Savings Project
million* **\$3.5**



MSA DESIGN

Additional Budget Considerations

Primary School

A Expanded Storage & Back-of-House	\$500k - \$700k
B South Entrance Enhancements	\$250k - \$500k

Elementary School

A Repurpose Existing Gym	\$900k - \$1.2m
B Connector Element	\$250k - \$400k

Middle & High School

A Combined Music Rooms (15,500 SF)	\$5.8m - \$6.4m
B Expanded Connector (8,500 SF)	\$1.9m - \$2.5m
C New Auxiliary Gym (7,000 SF - 10,000 SF)	<u>\$2.2m - \$3.0m</u>
Total -	\$11.8m - \$14.7m



MSA DESIGN

BUILDING A BRAVE FUTURE

Summary

- **Initial Goals**
- **Facilities Committee Recommendations**
- **Finance Committee Recommendations**
- **Planning and Design Vision Workshops**
- **Additional Considerations**



MSA

DESIGN

An aerial photograph of a school campus, including several large buildings, a parking lot with many cars, and a bus lot with several school buses. The entire image is overlaid with a semi-transparent red filter. The text "THANK YOU!" is centered in white, bold, sans-serif font.

THANK YOU!